

# GPSMAP® 5000 Series quick reference guide



### To find a marine service from your current location:

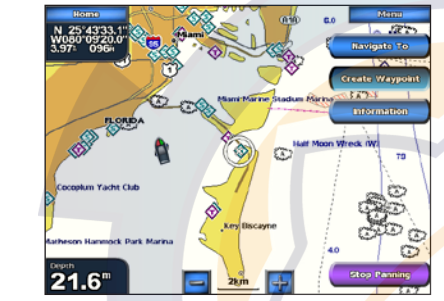
1. From the Home screen, touch **Where To?**
2. Touch the marine service category to which you want to navigate. The unit shows the list of the 50 nearest locations and the distance and bearing to each.
3. Touch the marine service item to which you want to navigate. A screen containing information about the selected marine service appears.
4. Touch **Navigate To > Go To**. (Or, touch Guide To when using a preprogrammed BlueChart g2 Vision card to use Auto Guidance.)
5. Follow the colored line on the screen to the destination.



List of Marine Service Items



Go to Destination



Navigation Chart

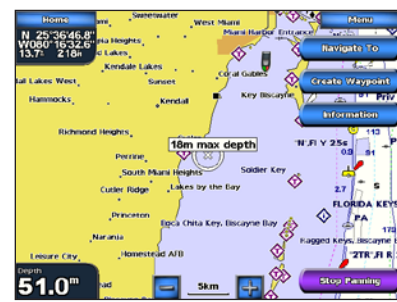


Create Waypoint Screen

## Navigating to a Destination on the Chart

### To navigate to a destination on the chart:

1. From the Home screen, touch **Charts > Navigation Chart**.
2. Touch the point on the chart to where you want to navigate. A pointer (⊗) marks the point.
3. Touch **Navigate To**.
4. Touch **Go To** to navigate directly to the location, or touch **Route To** to create a specific route to the location.
5. Follow the line on the Navigation Chart to the destination.



Navigation Chart



Follow the Route

## Editing or Deleting a Waypoint

### To edit a waypoint:

1. Touch the waypoint on the navigation chart.
2. Touch the button for the waypoint you want to edit.
3. Touch **Edit Waypoint**.
4. Touch the waypoint attribute you want to change (**Name, Symbol, Depth, Water Temp, or Position**).



Edit or Delete a Waypoint

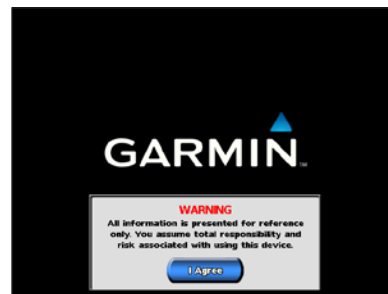
### To delete a waypoint:

1. From the Home screen, touch **Information > User Data > Waypoints**.
2. Touch the waypoint you want to delete.
3. Touch **Delete**.

## Using the Man OverBoard Feature

## Creating and Editing Routes

- To turn the unit on:**
1. Press and release the **Power** key.
  2. When the warning screen appears, touch **I Agree**.



- To turn the unit off:**
- Press and hold the **POWER** key.
- If one chartplotter is connected, the unit shuts down. If multiple chartplotters are connected, a prompt asks if you want to turn off the entire system. Touch **Yes** to turn off the entire network, or touch **No** to put the unit in sleep mode.

**WARNING:** See the *Important Safety and Product Information* guide in the product box for product warnings and other important information.

- To mark a Man Overboard location:**
1. From the Home screen touch **Man Overboard**. A message appears asking if you want to begin navigation to the MOB (Man Overboard).
  2. Touch **Yes** to begin navigating to the **Man Overboard** location.




OR


From the Home screen, touch **Mark > Man Overboard**.

- To delete a Man Overboard location:**
1. From the Home screen, touch **Information > User Data > Waypoints**.
  2. Touch the Man Overboard location you want to delete.
  3. Touch **Delete**.

Man Overboard

- To create a route from your present location:**
1. From the Navigation Chart, touch your destination. The destination is indicated by .
  2. Touch **Navigate To > Route To**.
  3. Touch the location where you want to make the last turn toward your destination.
  4. Touch **Add Turn**.
  5. To add additional turns, continue to touch the location where you want to make a turn (working backward from the destination) and then touch **Add Turn**.
  6. Touch **Done** to finish the route or touch **Cancel Route** to delete the route.



- To create a route in another location:**
1. From the Home screen, touch **Information > User Data > Routes > New Route**.
  2. Touch the route's starting point. The starting point is indicated by .
  3. Touch **Add Turn**.
  4. Touch the location of the first turn.
  5. Touch **Add Turn**. Repeat until the route is complete.



- To edit a route:**
1. From the Home screen, touch **Information > User Data > Routes**.
  2. Touch the route to edit.
  3. Touch **Edit Route**. You can edit the route name, turns, or delete the route.



Routes Screen



Route Information

## Adjusting the Backlight and Color Mode

- To adjust the backlight level:**
1. While the unit is on, press and release the **Power** key.
  2. Touch **Backlight**.
  3. To allow the unit to automatically adjust the backlight based on ambient light, touch **Auto**.



To manually adjust the backlight, either touch and drag the brightness bar or touch and hold **Up** or **Down**.

- To adjust the color mode:**
1. Press and release the **Power** key.
  2. Touch **Color Mode**.
  3. Touch **Day Colors**, **Night Colors**, or **Auto**.

## Using Combination Screens

- To access and change screen combinations:**
1. From the Home screen, touch **Combinations > Unused Combo** (if one is available).
- OR
- While viewing a Combinations screen, touch **Menu > Change Combination**.
2. Touch **Num Functions** to change the number of combination screens (1-4). Touch **Layout** to switch to a horizontal or vertical layout. Touch **Data Bar** to toggle the data bar on or off. Touch a combination screen button to select the screens to view. (When you select the combination screens to view, you will only be able to select from the options available to your unit.)
  3. Touch **Done**.



Select the number of combination screens

Change to vertical or horizontal layout

Toggle the data bar

Change combination screen 1

Change combination screen 2

Please visit [www.garmin.com](http://www.garmin.com) for additional documentation and information.